

The logo for BPAD, featuring the letters 'B' and 'P' in blue and 'A' and 'D' in green, all in a bold, outlined font. A small 'SM' trademark symbol is located to the right of the 'D'.

BINHAI PLANNING AND ARCHITECTURAL DESIGN CO., LTD.

The logo for BPAD, featuring the letters 'B' and 'P' in blue and 'A' and 'D' in green, all in a bold, outlined font. A small 'SM' trademark symbol is located to the right of the 'D'.

BINHAI PLANNING AND ARCHITECTURAL DESIGN CO., LTD.

11th Floor, Wanhao Building
333 Binshuixidao, Nankai District
Tianjin, P.R.China
Tel: 86-22-23072501, 23072502
Postal Code: 300384
Fax: 86-22-23072503
E-mail: mail@binhaidesign.com
www.binhaidesign.com

Transform the Built Environment

WHO WE ARE

Binhai Planning & Architectural Design Co., Ltd. (BPAD)

is an engineering-based EPC turnkey contractor based in Tianjin, China. Our services include **investment consulting, project management, engineering, modeling, detailing, procurement, construction, commissioning, and building operation & maintenance** — we offer clients these services as a complete package or on a service-by-service basis.

BPAD was founded on January 12th, 1985. Currently, the company is a fully self-operating private entity. Our clients are spread throughout the world with projects in the United States, Australia, Asia, and the Middle East. International codes and standards are adopted and implemented for all projects in each area of operation.

BPAD actively promotes green building concepts and technologies throughout the building life cycle, and we are one of the first engineering firms in China to adopt LEED rating systems. BPAD is also one of the leaders in utilizing Building Information Modeling (BIM) as the single platform for design, detailing, construction, commissioning and operation. This enables our clients to play an integrated role throughout the project and ensures that the final outcome meets every detail of the employer's requirements.

WHAT WE DO

INVESTMENT CONSULTING

EPC TURNKEY CONTRACTING

PROJECT MANAGEMENT

URBAN PLANNING

ARCHITECTURE & ENGINEERING SERVICES

BIM MODELING

DETAILING & DRAFTING

SOURCING & PROCUREMENT

GREEN BUILDING CONSULTING

BUILDING COMMISSIONING

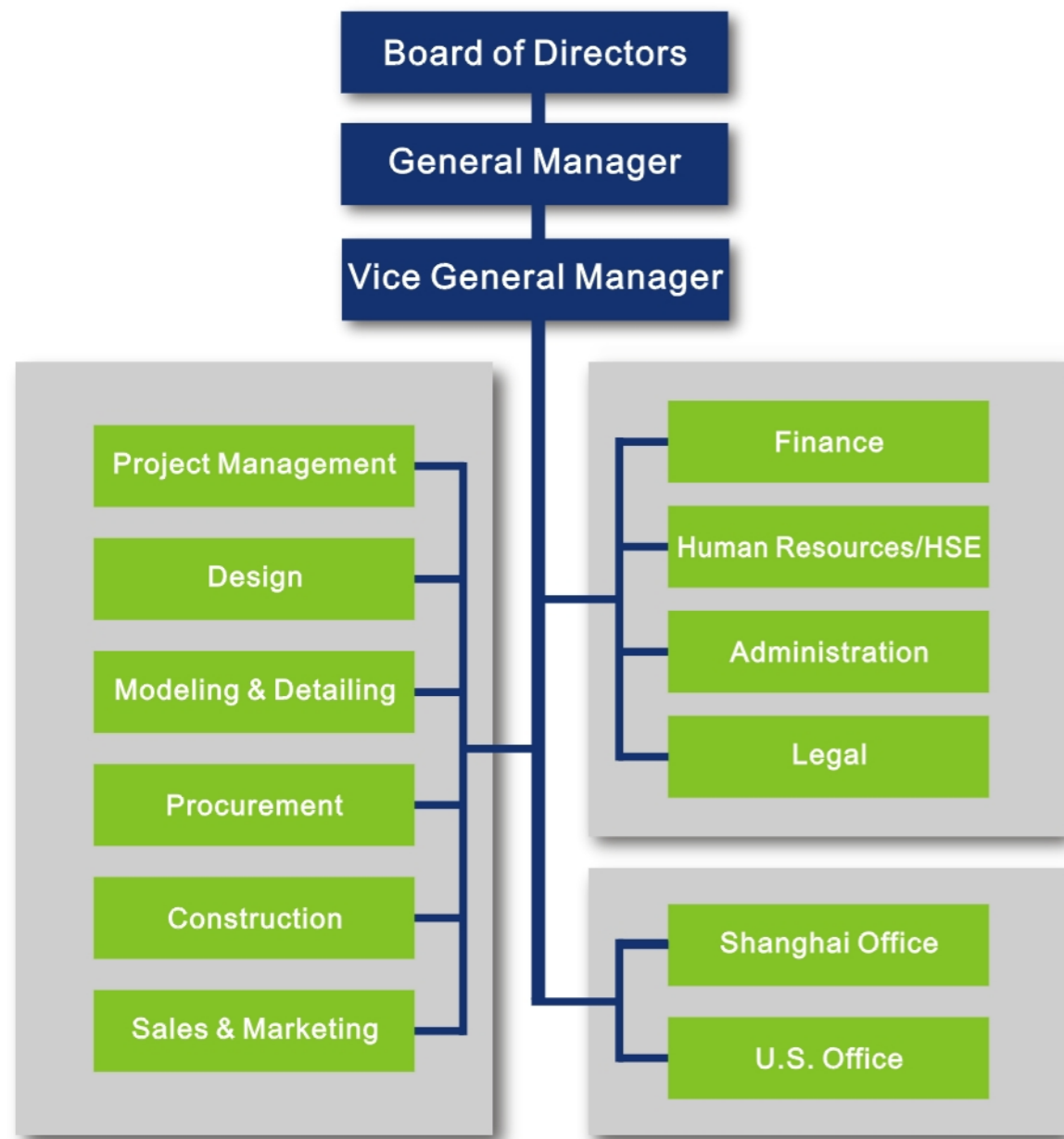
CONSTRUCTION

BUILDING OPERATION & MAINTENANCE



OUR PEOPLE

BPAD is comprised of like-minded service oriented technical staff numbering over 100. Our family of professionals includes certified **project managers**, registered **architects**, **structural engineers**, **facility engineers**, **urban planners**, **cost engineers**, **constructors**, certified **accountants**, lawyers, **HSE professionals**, and **LEED Accredited Professionals**. We strive to offer our clients a holistic, customized design/build experience tailored specifically to meet the needs of any growing company.



Li Wei Xin
MSc.Civil Engineering
President



Bruce Hicks
Structural Engineer
Vice President



Sydney Qiu
Structural Engineer/LEED AP
General Manager



Ian Cui
MBA/MCIOB
Vice General Manager



Ben Huober
BA/MBA
Sales Department Manager



Sean Filson
BA/MBA
Business Development Manager



John Fen
Structural Engineer
Design Department Manager



Jane Chen
Structural Engineer
Detailing Department Manager



Gary He
Civil Engineer
Procurement Department Manager



Joe Wei
Associate Constructor
Construction Department Manager



Win Niu
Structural Engineer
Project Manager



Devin Lu
Civil Engineer
Project Manager



Simon Li
Structural Engineer
Manager of Shanghai Office



Jack Zheng
Lawyer
Legal Department



Paige Ge
BA Accounting
Finance Department Manager



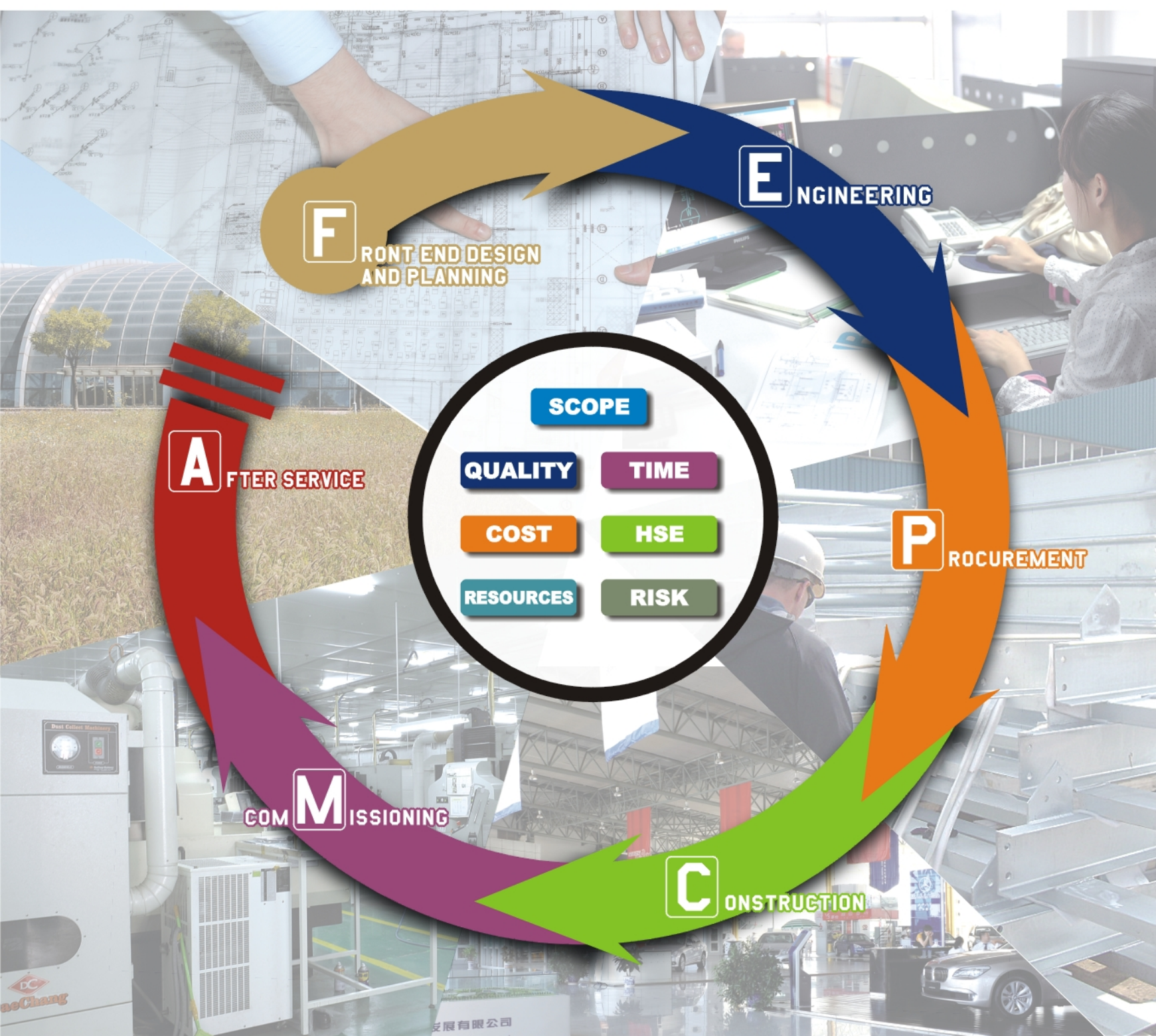
May Kang
BA Management
Administration

PROJECT MANAGEMENT

PROJECT TEAMS

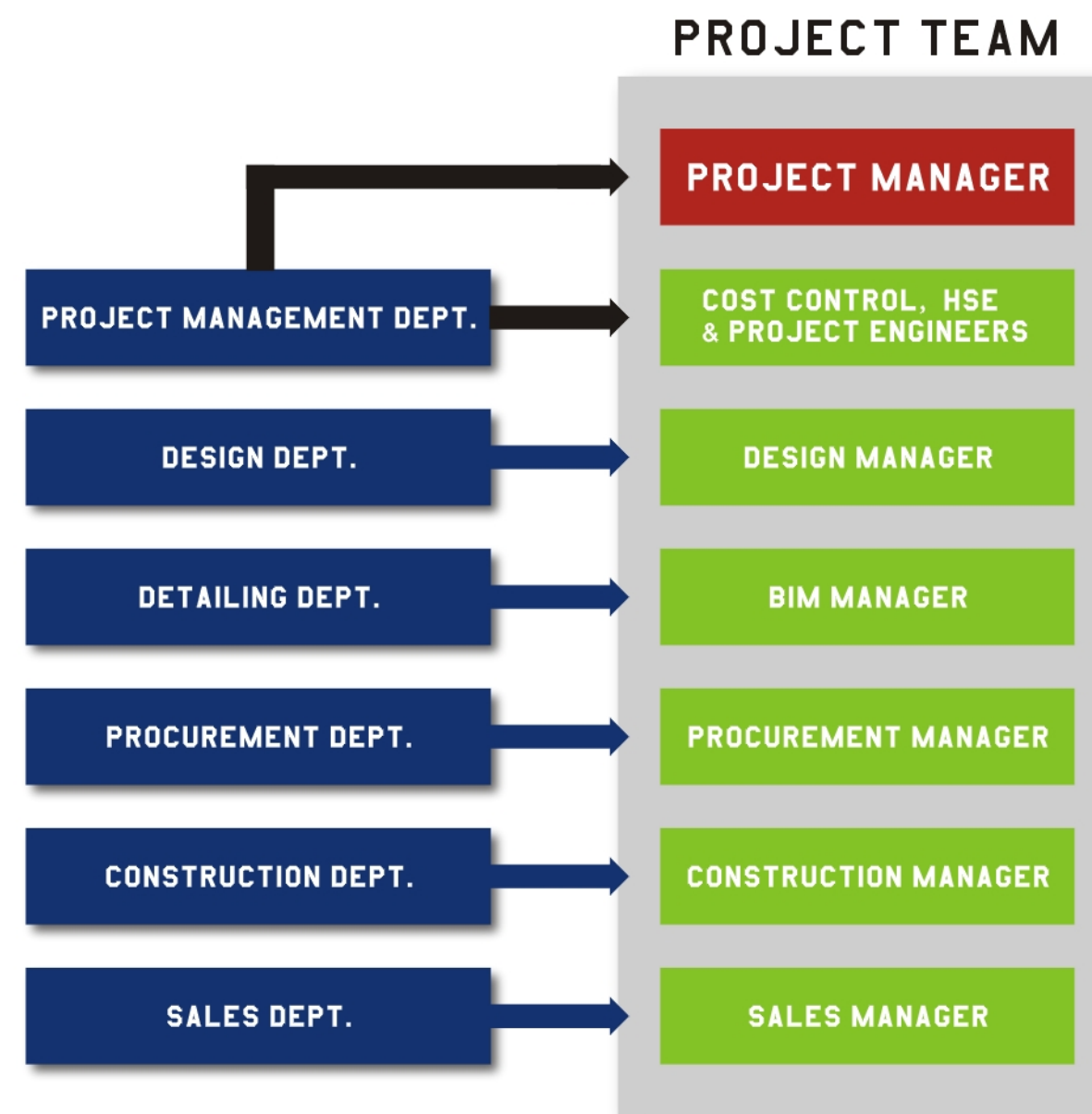
6 Overlapping Phases, 7 targets

BPAD utilizes a unique project management strategy with 6 overlapping phases and 7 targets. The targets are planned and controlled throughout all phases and sub-phases.



Full Responsibility

The Project Manager is responsible for assembling the project team and is solely accountable for delivering the project to employer specifications and requirements.





INVESTMENT CONSULTING



- OPPORTUNITY RESEARCH
- PRE-FEASIBILITY STUDY
- FEASIBILITY STUDY
- ENVIRONMENTAL IMPACT ANALYSIS
- SAFETY ANALYSIS

F·E·P·C·M·A
Turnkey



THE BPAD PROJECT MANAGEMENT MATRIX

Your project is accomplished in 6 overlapping phases from Front End Design and Planning to After Service. Phase managers are in charge of each phase while reporting to a designated project manager for added control.

	F	E	P	C	M	A
BUILDING FUNCTION	→					
	→					
TARGETS	SCOPE	→				
	QUALITY	→				
	TIME	→				
	COST	→				
	HSE	→				
	RESOURCES	→				
	RISK	→				
WBS CONNECTIONS	→					

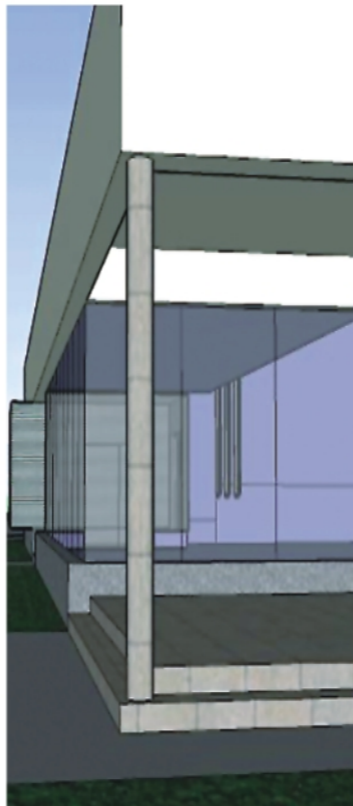
According to the project, the employer's building function requirements are identified and addressed in each phase. Concurrently, 7 project management targets and all WBS inter-connections are managed and controlled in a comprehensive and continuous manner.

F

FRONT END DESIGN AND PLANNING

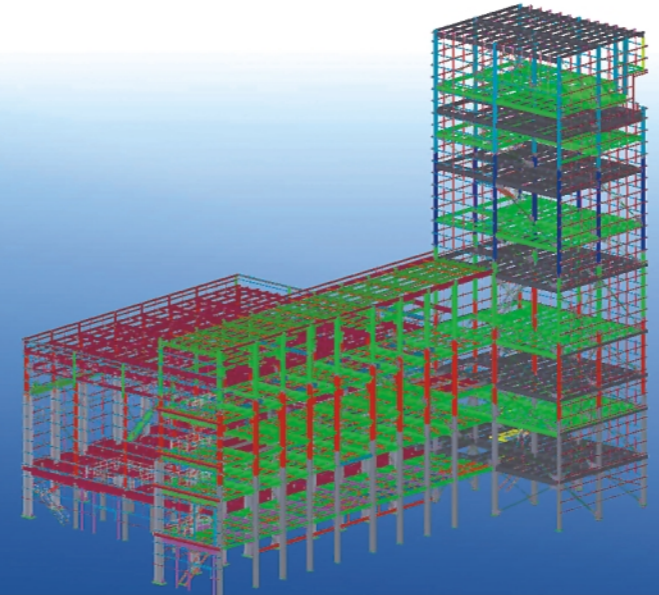


- EMPLOYER'S REQUIREMENTS DOCUMENT
- SCHEMATIC DESIGN
- WORK BREAKDOWN STRUCTURE – WBS.F
- PROJECT MANAGEMENT PLAN – PMP.F
- EPC TURNKEY PROPOSAL
- EPC TURNKEY CONTRACTING



E

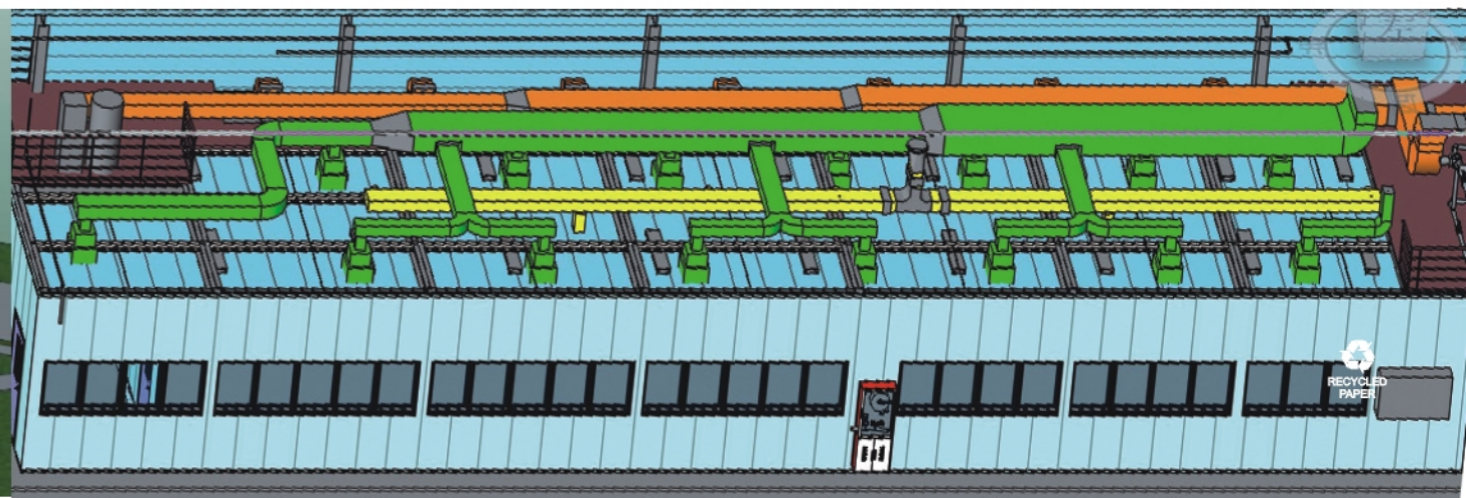
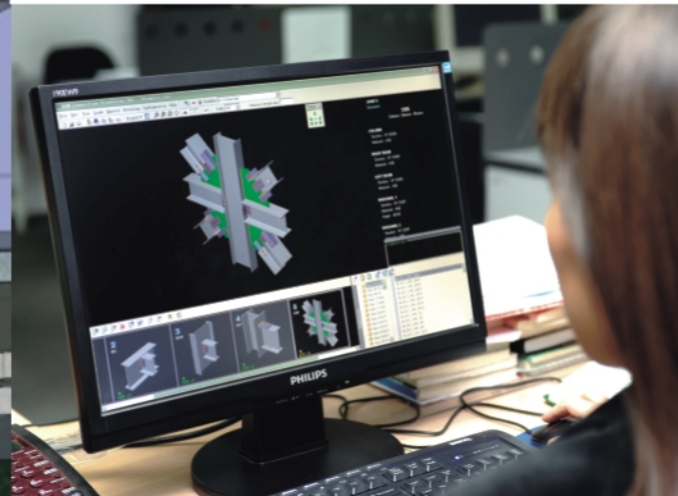
ENGINEERING



- CONCEPTUAL DESIGN AND MODELING
- WORK BREAKDOWN STRUCTURE- WBS.E1
- PROJECT MANAGEMENT PLAN- PMP.E1

- PRELIMINARY DESIGN AND MODELING
- WORK BREAKDOWN STRUCTURE- WBS.E2
- PROJECT MANAGEMENT PLAN – PMP.E2

- CONSTRUCTION DRAWING DESIGN AND MODELING
- WORK BREAKDOWN STRUCTURE – WBS.E3
- PROJECT MANAGEMENT PLAN – PMP.E3



P

ROCUREMENT

- PROCUREMENT PLANNING
- PREQUALIFICATION
- BID REQUISITION DOCUMENTS
- BID EVALUATION
- SUBCONTRACTING
- EXPEDITING
- QA/QC

C

ONSTRUCTION

- CONSTRUCTION PLANNING
- DETAILING
- CONSTRUCTION MANAGEMENT
- PROJECT TURNOVER

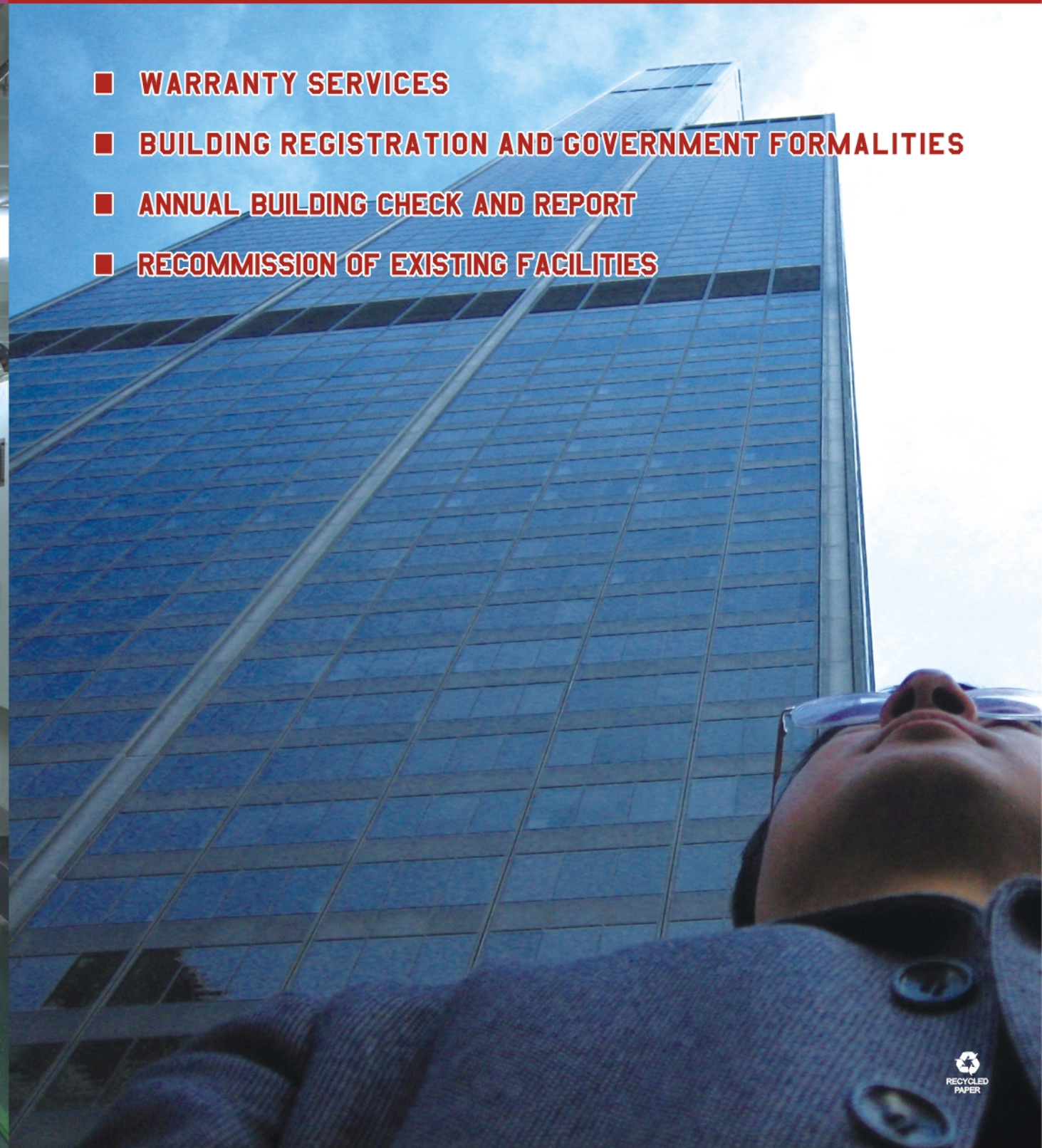


COMMISSIONING



- COMMISSIONING PLAN
- COMMISSIONING SPECIFICATION
- COMMISSIONING MANAGEMENT
- TESTS ON COMPLETION
- REPORT AFTER TURNOVER
- TESTS AFTER COMPLETION
- REPORT AFTER WARRANTY PERIOD

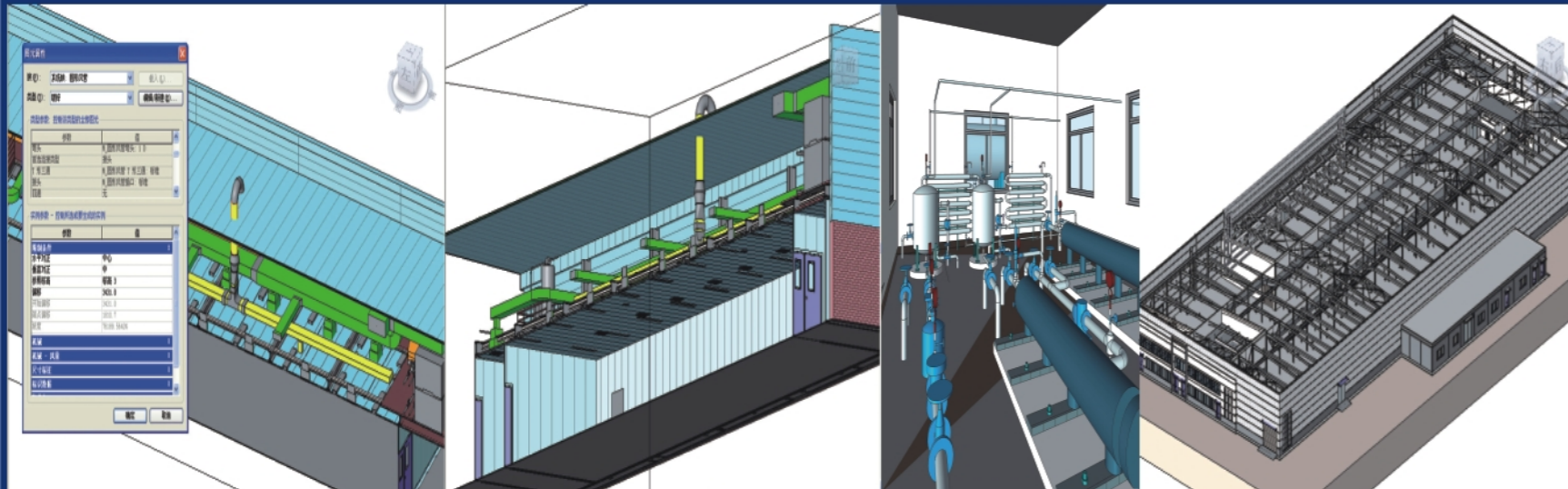
AFTER SERVICE



- WARRANTY SERVICES
- BUILDING REGISTRATION AND GOVERNMENT FORMALITIES
- ANNUAL BUILDING CHECK AND REPORT
- RECOMMISSION OF EXISTING FACILITIES

BUILDING INFORMATION MODELING (BIM)

GREEN BUILDING COMMITMENT



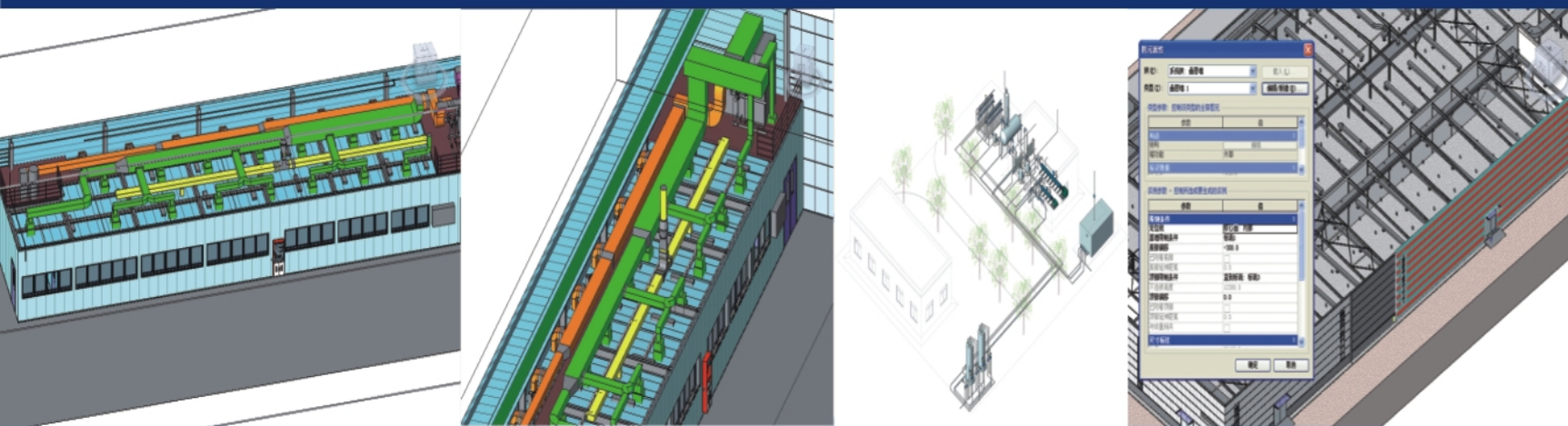
*You care about the environment,
We do too.*

BPAD strives to promote green building concepts in all its projects—as professional engineers, it is our responsibility to future generations. The HSE target is set in the F-phase within the Employer Requirements Document and maintained throughout all 6 phases. BPAD's Certified LEED Accredited Professionals utilize the LEED rating system developed by the U.S. Green Building Council (USGBC) as well as the GB 3-star system (Chinese Green Building Evaluation Standard) for rating and evaluating projects.

Our LEED AP certified staff consult every step of the way to conceptualize, design, and construct a building that is fully functional, sustainable, and cost effective for the long-term.

Building Information Modeling —

BIM is built on procedures and complimented by our use of Autodesk® Revit® Architecture/Structure/MEP software, helping you experiment with early design concepts and forms—more accurately maintaining your vision through design, documentation, and construction. Now we can quickly and efficiently show you the full impact of building design decisions, as well as identify possible problem areas so that we can make changes and update all facets of your project. These virtual models are easily transferred between our design team of architects, engineers, and consultants to the construction managers and on to the owner.



WORLD OPERATIONS AND PROJECT SITES

OUR CLIENTS

United States

Cedar Rapids, Iowa
Tampa, Florida
Columbus, Nebraska
Clinton, Illinois

China

Beijing Changchun Xi'an
Tianjin Shenyang Urumqi
Shanghai Dalian Fuzhou
Harbin Qingdao Belhai

Middle East

Suez, Egypt
Fujairah, United Arab Emirates

Australia

Middlemount, Queensland

ADM

TOYOTA

McDonald's

NISSAN

VEOLIA

SUMITOMO

Danfoss

YAMAHA

ALSTOM

KUMHO

LG

SEW

THIESS

TING HSIN